

The IV Bolus Order will be changing effective **April 1, 2009**. This change is due to the IV bolus orders automatically discontinuing if the infusion administration time has elapsed prior to the nurse documenting the administration. This change will prevent this from occurring. Beginning April 1, 2009, please utilize one of the following three ways to order an IV Bolus.

### IV Bolus Order only

1. Click the Add order icon and select Add Order.

In this example, Sodium Chloride will be ordered to be administered as a 500 mL bolus over 30 minutes.

### Two Ways to Search:

- The **IV solution name**. Select the order name with *bolus* at the end.

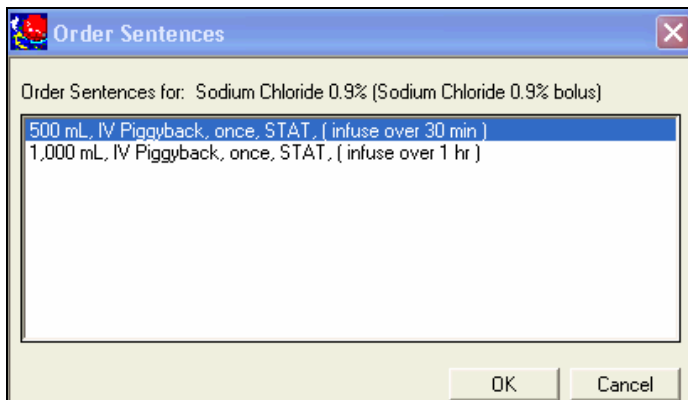
Sodium Chloride 0.9%  
[Sodium Chloride 0.9% bolus](#)

- The word **bolus**, after changing the Search option to Contains. Select the order name with *bolus* at the end.

Search  Contains

Normal Saline Bolus  
 propofol bolus ( for procedural anesthesia )  
[Sodium Chloride 0.9% bolus](#)

2. The Order Sentence window will display. Select the sentence that most closely resembles the way in which the order will be placed and click OK.



3. The information from the order sentence will automatically complete the order details.

**Medications**

Sodium Chloride 0.9% Order 3/30/2009 11:45 AM 500 mL, IV Piggyback, once, STAT, Start: 3/30/2009 11:45 AM, Stop: 3/30/2009 11:45 AM  
 (Sodium Chloride 0.9% b... (infuse over 30 min)

▼ Details for Sodium Chloride 0.9% (Sodium Chloride 0.9% bolus)

Details Order Comments

Remaining Administrations: 1 Stop: 3/30/2009 11:45:00 AM

Order details

Strength Dose  
 Strength Dose Unit  
**Volume Dose [500]**  
 Volume Dose Unit [mL]  
 Drug Form  
 Route of Administration [IV Piggyback]  
 Frequency [once]  
 PRN [No]  
 PRN Reason  
 Pharmacy Order Priority [STAT]  
 Reference Start Date/Time [3/30/2009 11:45 AM]

Detail values

500

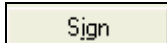
4. If necessary, change the appropriate order details to modify the order.

For example, the way the order is to be currently placed, the IV bolus of 500 mL, will be administered over 30 minutes. To order this to be administered over an hour, change the *infuse over time* to 60 minutes.

PRN Reason  
**Pharmacy Order Priority [STAT]**  
**Reference Start Date/Time [3/30/2009 11:45 AM]**  
 First Dose Date/Time [3/30/2009 11:45 AM]  
 Stop Date/Time [3/30/2009 11:45 AM]  
 Duration  
 Duration Unit  
**Infuse Over [60]**  
 Infuse Over Unit [min]  
 Dispense From Location  
 OS Note

60

5. Once the order details are appropriate for your patient, *Sign* the order.



6. Click the *As Of* button (at the top of the screen) to refresh the view.



7. On the Orders tab, the IV bolus order will display in the Medications category.

**Medications**

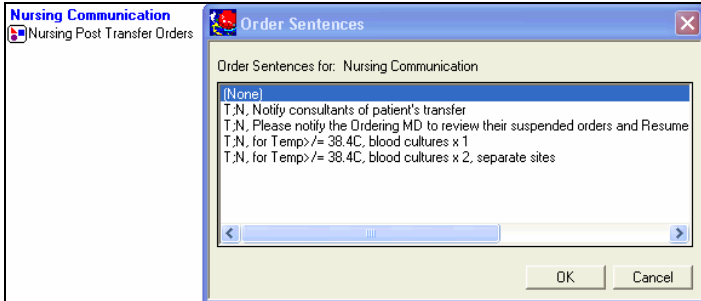
Sodium Chloride 0.9% (Sodium Chloride 0.9% bolus) Ordered 500 mL, IV Piggyback, once, STAT, Start: 03/30/09 11:45:00, Stop: 03/30/09 11:45:00, (infuse over 60 min)

8. When checking the administration of the IV bolus, click on the MAR Summary tab and review the Scheduled Medication section.

March 28, 2009 0000 - March 31, 2009 2359								
	3/29/2009 0800 - 1159	3/29/2009 1200 - 1559	3/29/2009 1600 - 1959	3/29/2009 2000 - 2359	3/30/2009 0000 - 0359	3/30/2009 0400 - 0759	3/30/2009 0800 - 1159	3/30/2009 1200 - 1559
Scheduled								
Sodium Chloride 0.9% (Sodium Chloride 0.9% bolus) 500 mL, IV Piggyback, once, STAT, Start: 03/30/09 11:45:0...								500 mL @1222

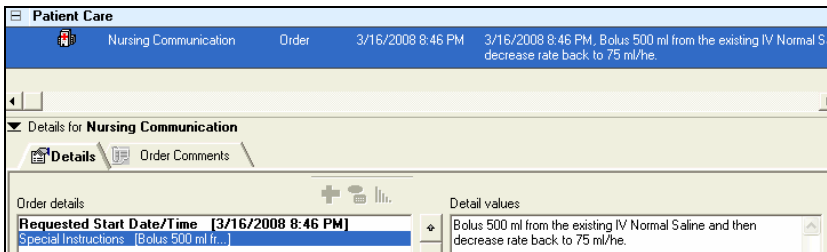
## Administering an IV Bolus from an *Existing* IV Solution

1. When administering an IV bolus from an **existing** IV solution, enter an order for a **Nursing Communication**.
2. The order sentence window will display, select **None**.

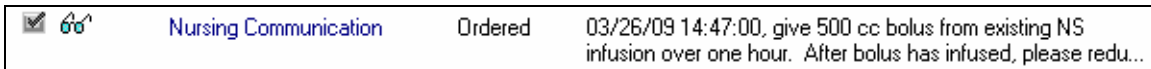


3. Click on the Order Detail of *Special Instructions* and complete the bolus information. The bolus information may also be completed in the Order Comments.

In the example, the order is placed to administer a 500 mL bolus from the existing solution of NS and decrease the rate back to 75 mL/hr. in Special Instructions.



4. *Sign* the order.
5. Click the *As Of* button (at the top of the screen) to refresh the view.
6. Once this order has been placed, it may be viewed on the Orders tab in the Patient Care category.  The order will display as follows:



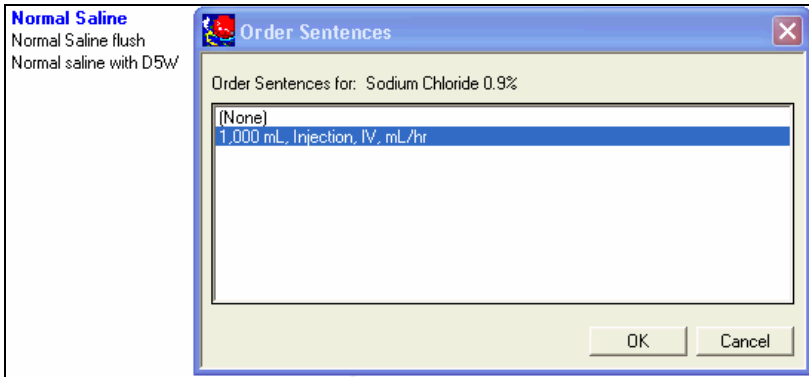
7. Once the nurse has documented the administration of the bolus, this will display on the MAR Summary in the Continuous Infusion section.

Continuous Infusions	
<b>Normal Saline 1,000 mL</b> 1,000 mL, IV, Routine, Start: 03/30/09 14:25:00, 75 mL/hr (infuse over 13.3 hr ), (replace every) 13.3 hr, Dispense From: North (Rx), Continuous IV, Populate Charting Weight From Order	<b>Pending</b> Last bag started: 3/30/2009 2:29 PM
<b>Administration Information</b>	Begin Bag 1,000 mL 500 mL Bolus Auth (Verifie
<b>Sodium Chloride 0.9%</b>	500 mL Auth (Verified)

## Administering an IV Bolus & a Continuous IV of the Same Solution with the Same Order.

If the patient does not have an IV and you want to administer a bolus and then decrease the rate of the same solution to a maintenance rate, this can be done with one order.

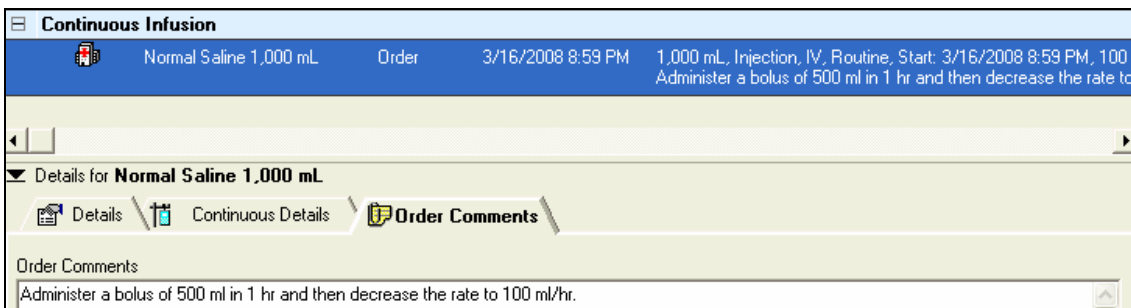
1. Click the Add order icon and select Add Order.
2. Search for the IV solution. In this example, we will administer Normal Saline.



3. Complete the Continuous Details.

Details for Normal Saline 1,000 mL				
Details		Continuous Details		Order Comments
Base Solution	Bag Volume	Rate	Infuse Over	
Normal Saline	1000 mL	100 mL/hr	10 hr	
Additive	Additive Dose	Occurrence		
Total Bag Volume	1000 mL			




4. Complete the Order Comments with the bolus instructions.





5. Sign the order.

6. Click the As Of button (at the top of the screen) to refresh the view.

7. Once the order has been placed, it will display on the Continuous Infusion category on the Orders tab.

Continuous Infusion	
   Normal Saline 1000 mL	Ordered 1,000 mL, IV, Routine, Start: 03/30/09 14:25:00, 100 mL/hr ... Please administer a 500 mL bolus over one hour prior to the ...

8. To view nursing documentation of the bolus and continuous infusion, review the MAR Summary – Continuous Infusions.

Continuous Infusions	
  <b>Normal Saline 1000 mL</b> 1,000 mL, IV, Routine, Start: 03/30/09 14:25:00, 100 mL/hr (infuse over 10 hr), (replace every) 13.3 hr, Dispense From: North (Rx), Continuous IV, Populate Charting Weight From Order Please administer a 500 mL bolus over one hour ...	<b>Pending</b> Last bag started: 3/30/2009 2:29 PM
<b>Administration Information</b>	Begin Bag 1,000 mL 75 mL/hr Auth (Ve
<b>Sodium Chloride 0.9%</b>	500 mL Bolus Auth (Verified) 500 mL Auth (Verified)